

Last SCC Training Dates

October 10, 2019 (Thursday)

9:00 a.m. SCC Training

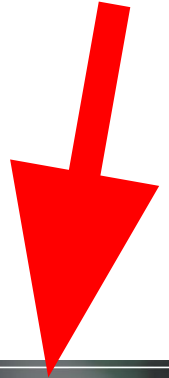
6:00 p.m. SCC101

7:00 p.m. SCC training

-
- SCC101 takes approximately *50 minutes*
 - SCC 101 is intended for those new to serving on the SCC, though all may attend.
 - SCC training takes approximately *90 minutes*
 - SCC training is for all members of the SCC; parents new and returning, teachers and principals.

School LAND Trust Website

<http://www.schoollandtrust.org/>

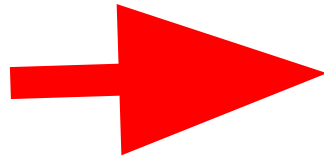


School LAND Trust
Learning And Nurturing Development

Search ...

Login & Manage Account

Schools Timelines/Due Dates Laws and Rules Lands Fund Contact ▾



Public Reports Section

Public Reports

District SCC Resources

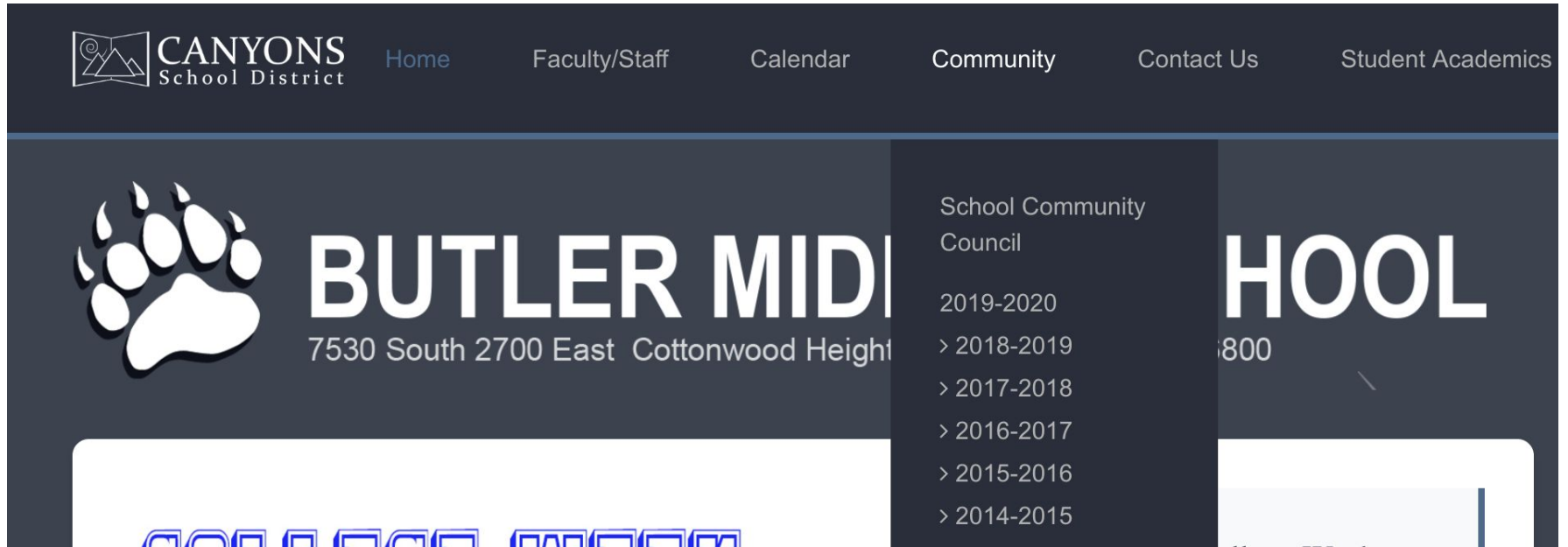
<http://www.canyonsdistrict.org/scc>

▲ Digital Citizenship & School Safety

- School Safety & Dig. Cit. Report
 - Digital Citizenship
 - Additional Resources
-

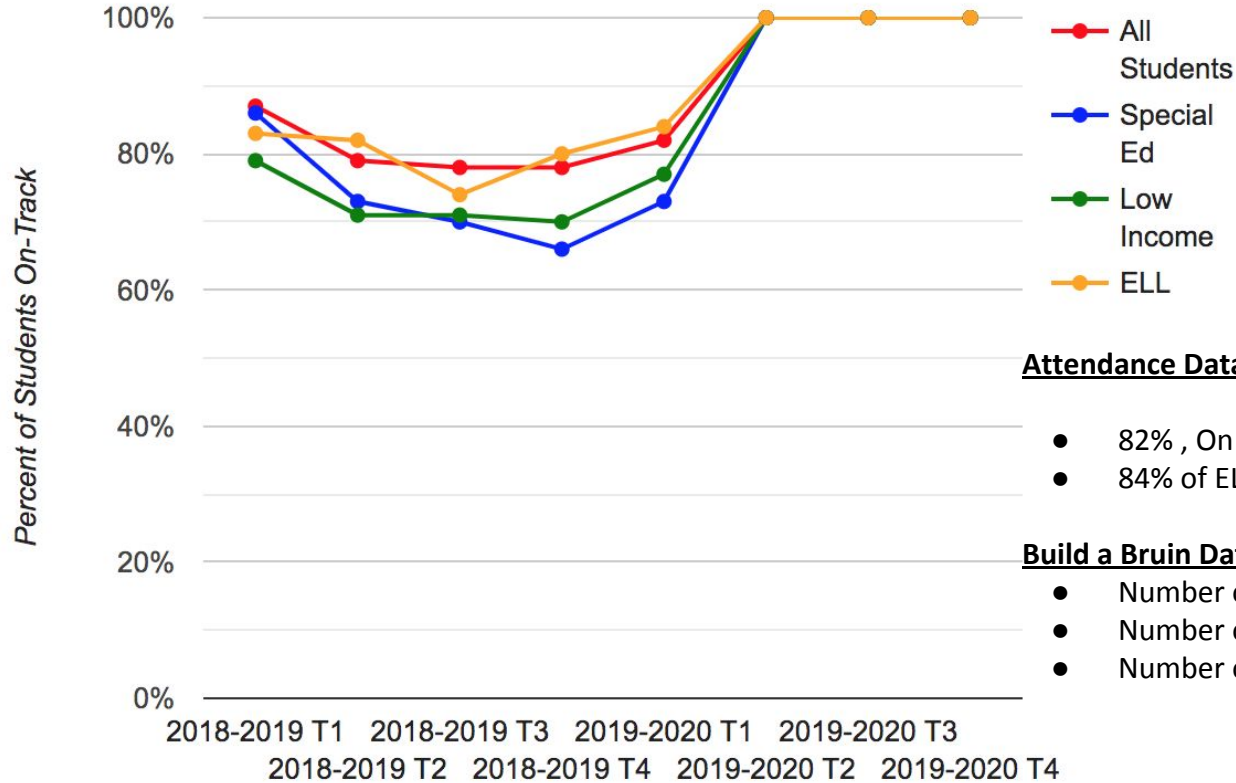
Butler SCC Info

<https://butlermiddle.canyonsdistrict.org/>



The image shows a screenshot of the Butler Middle School website. At the top, there is a dark blue navigation bar with the Canyon School District logo on the left and several menu items: Home, Faculty/Staff, Calendar, Community, Contact Us, and Student Academics. Below the navigation bar is a large dark blue banner. On the left side of the banner is a white paw print logo. To the right of the paw print, the text reads "BUTLER MIDDLE SCHOOL" in large white letters, with "7530 South 2700 East Cottonwood Heights" in smaller white text below it. On the right side of the banner, there is a white box containing the text "School Community Council" and a list of years from 2019-2020 down to 2014-2015, each preceded by a right-pointing chevron. To the right of this box, the word "SCHOOL" is partially visible in large white letters, with "800" below it. At the bottom of the banner, there are several social media icons in white.

Attendance



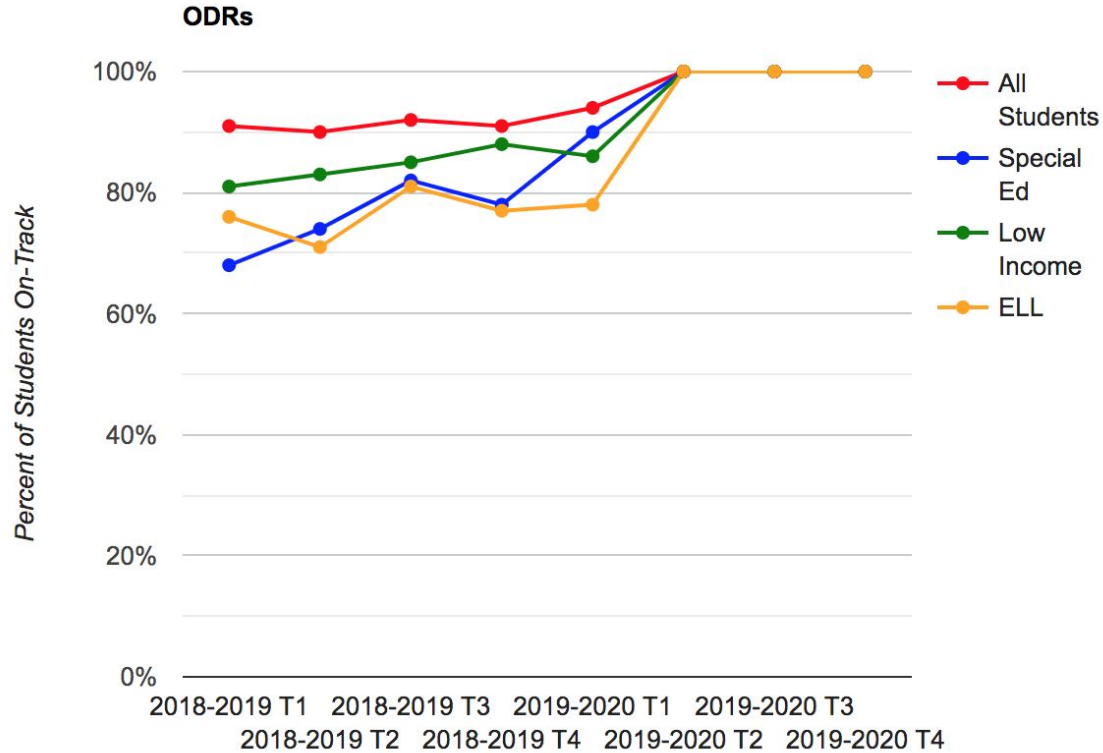
Attendance Data:

- 82% , On Track, (CSIP Goal 80%)
- 84% of ELL students On Track (CSIP Goal 80%)

Build a Bruin Data:

- Number of Bears earned - **47**
- Number of classes with 1 Bear - **34**
- Number of classes with more than one Bear - **13**

Office Discipline Referrals (ODR's)



School Connectedness

- **School Connectedness Survey**

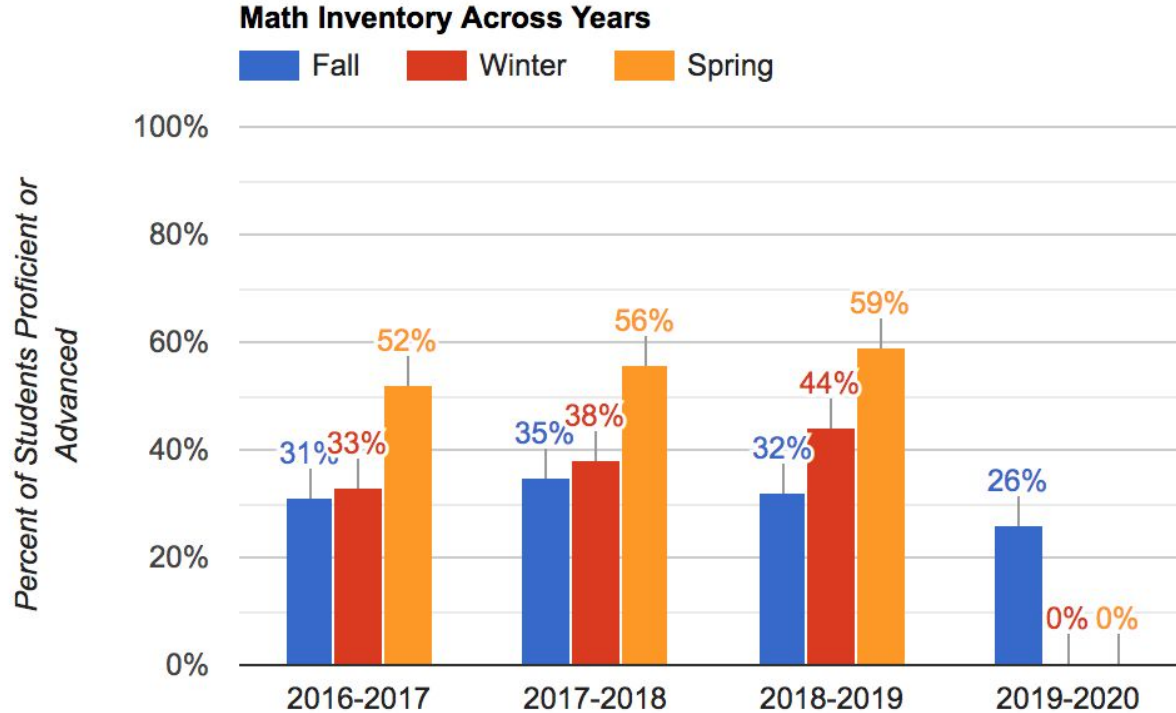
- Questions

- I like school
 - I feel successful at school
 - My teachers know my name and know something about me.
 - I have friends at BMS
 - I know an adult at school I can talk with if I need help.

- **86% Agree or Strongly agree**

(CSIP Goal 85%)

Math Inventory Data



Reading Inventory Data

